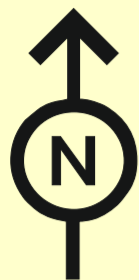


# Geology of the Access Ramp to Alto de Perules Mazarrón (Pb-Zn) Mining District - SE Spain

Tape & Compass Geologic Mapping - Basic Anaconda Mapping Procedures



Mazarrón: Perules sector

4162980N

145 masl

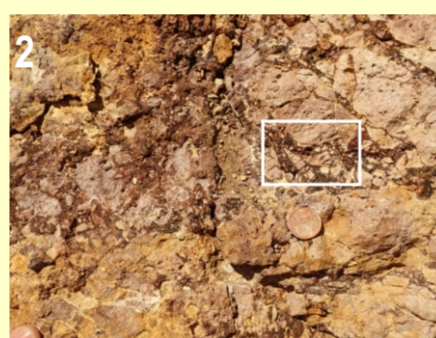
'Air Side'

'Rock Side'

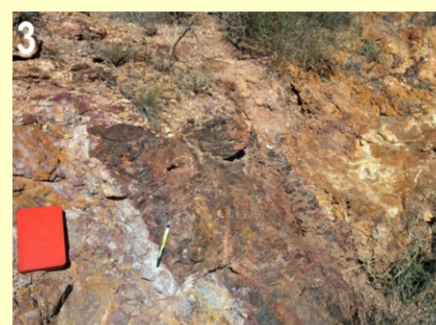
Rock waste deposits of no economic value



1  
Quartz porphyry, with abundant and large quartz phenocrysts.



2  
2 (zoom)  
Implosion breccia (puzzle texture)  
Clasts: altered dacitic porphyry.  
Matrix: goethite.



3  
Old sulfide vein completely leached and oxidized into goethite and Mn oxides; the host rock (dacitic porphyry) is strongly altered (feldspars → kaolin)



4  
Highly altered and fractured dacitic porphyry. Normal fault (see white arrow); oxidized vein (yellow arrow).

4162930N

Quartz porphyry of dacitic composition, with large quartz phenocrysts of up to 4 mm and highly altered (to kaolin) plagioclase crystals. These rocks are less altered than the dacitic porphyry.

140 masl

4162880N

Dacitic porphyry, with small quartz crystals (< 1 mm). The rock is strongly altered, with pervading presence of kaolin and hematite (supergene alteration).

'Rock Side'

'Air Side'

Stwk

Fracture related breccia

Mn oxides vein (3)  
Implosion breccia:  
puzzle texture (2)

4162830N

130 masl

647460E

647510E

## Dome Complex of Perules

- Quartz porphyry
- Dacitic porphyry, in part dome breccia facies
- Rock waste deposits

## Supergene alteration

- Kaolin
- Hematite
- Silicification

## Fractures and veins

- Barren fractures
- Jarosite veins
- Veins infilled with goethite (red) and Mn oxides (black)

Stwk Stockwork

⊠ Artisanal shaft

● C Mapping station and altitude (meters above sea level: masl)

647510E  
4162830N  
UTM Coordinates

Geology: J.F. Barrenechea & R. Oyarzun  
12th of January 2018



Departamento de Mineralogía y Petrología  
Facultad de CC Geológicas  
Universidad Complutense Madrid

Ediciones R. Oyarzun & P. Cubas  
Aula2punto.net (www.aulados.net) - GEMM